

# ICONIC SHYAMAL

Business. Retail. Lifestyle. Communities.



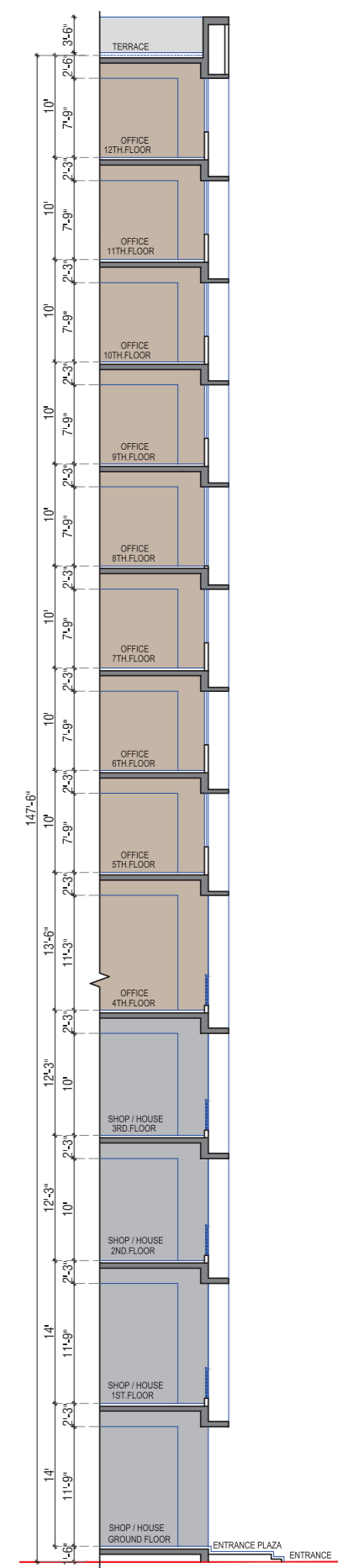
Ground + 12 floors | Retail | Offices | Independent corporate houses

**GROUND FLOOR PLAN**



40.00 MT. WIDE T.P.S. ROAD

30.00 MT. WIDE T.P.S. ROAD



# PROJECT IN A NUTSHELL

## Retail

- Ground to 3rd floor
- 91 shops
- All shops with wide 17 feet frontage

## Offices

- 4th floor, large office space, single floor plate
- 5th to 12th floor offices, ranging from 800 sq.ft. feet to 4,300 sq. ft. approximately

## Independent corporate houses

- 4 corporate modules
- Ground + 3 floors
- 13,000 - 14,000 sq. ft.

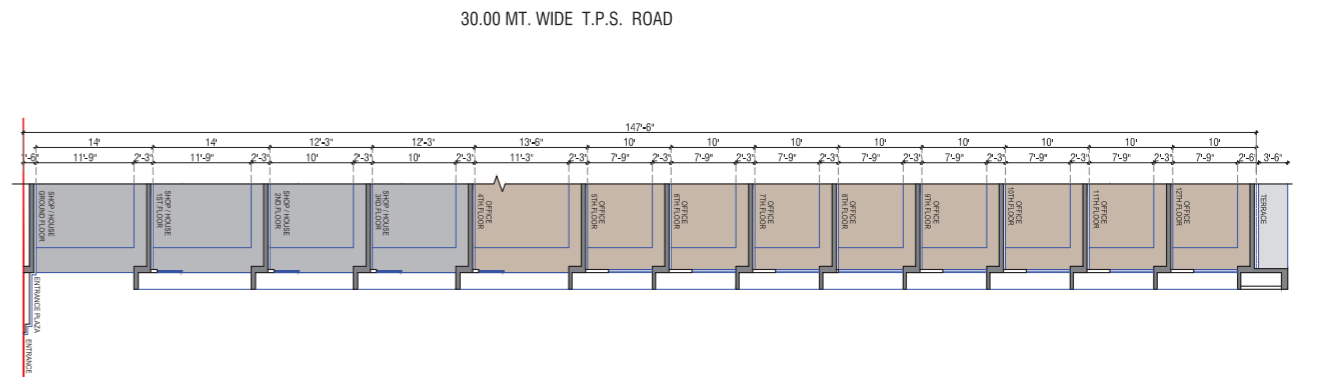
## Amenities

- Double height foyer with Italian marble cladding
- Ground floor open air cafeteria
- Contemporary, large, state-of-the-art gymnasium
- Landscaped, collaborative spaces and seating areas within the campus
- VIP lounge
- International standard elevators

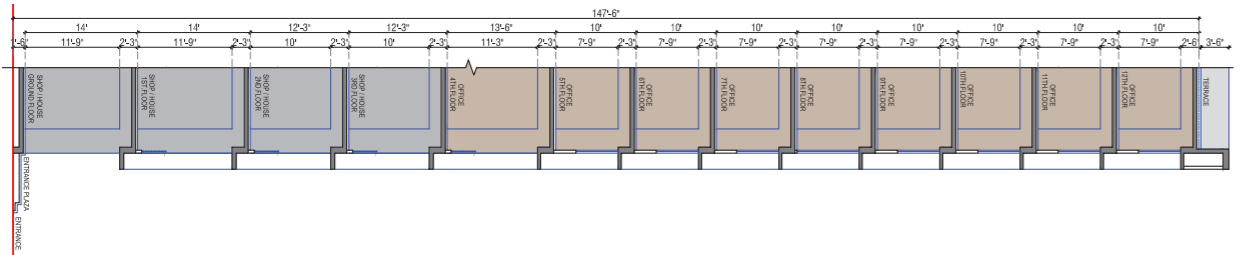
## Parking

- Large, three-level basement parking space
- Parking for 4 wheelers and 2 wheelers
- Ground floor parking for retail
- Ample visitors car parking

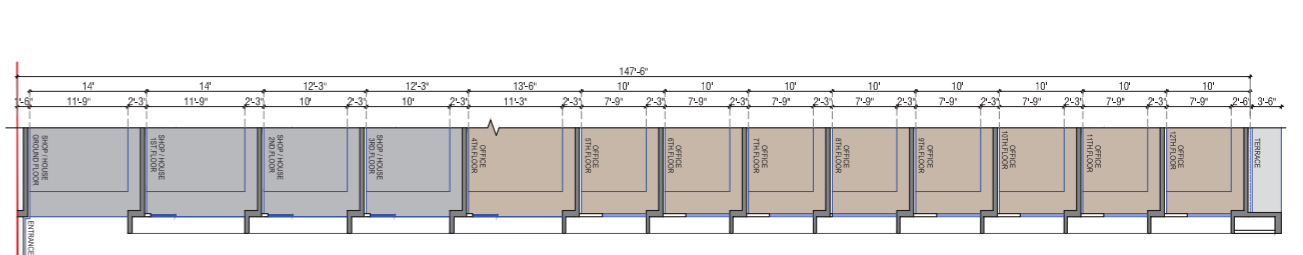
## FIRST, SECOND, THIRD FLOOR PLAN



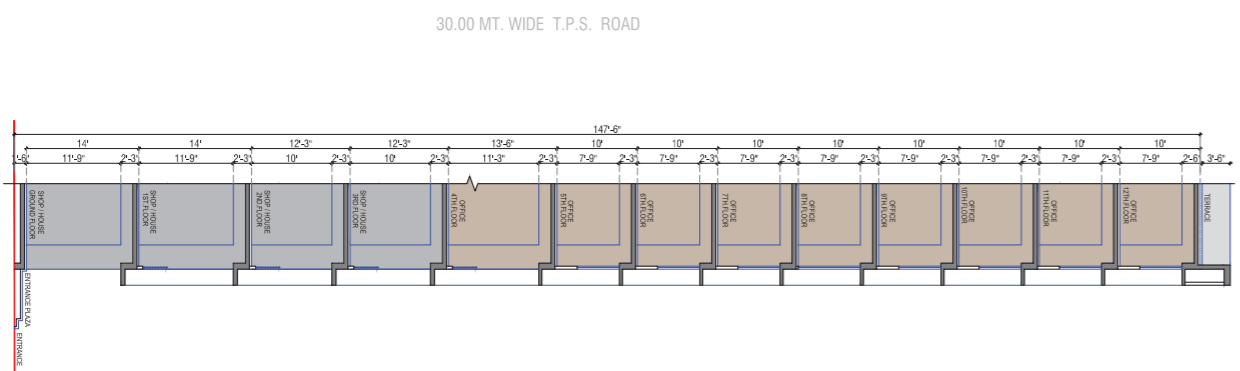
# FOURTH FLOOR PLAN



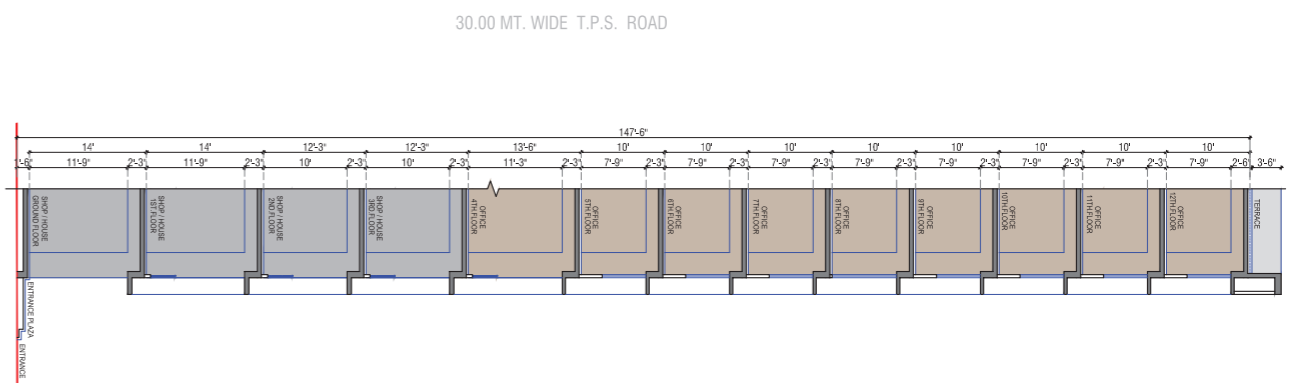
# FIFTH FLOOR PLAN



# SIXTH FLOOR PLAN



# SEVENTH TO TENTH FLOOR PLAN





**ICONIC  
SHYAMAL**

Business. Retail. Lifestyle. Communities.

M: 95745 80994 • 98257 29797 W: [www.iconicshyamal.com](http://www.iconicshyamal.com)  
Site address: Shyamal Crossroads, 132 ft. Ring Road, Ahmedabad.

Developer: Shafalya Infralink LLP, Ahmedabad.